

Steel Square Boxes

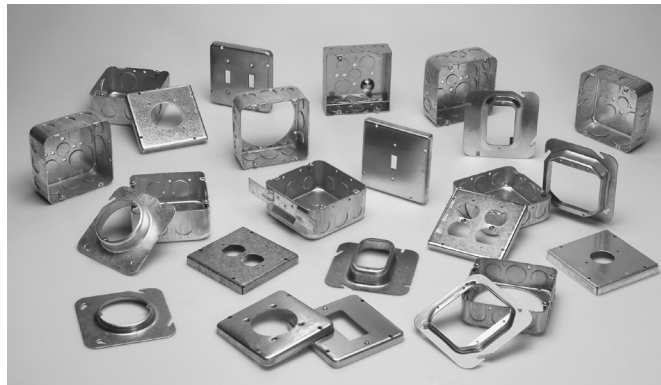
4¹¹/₁₆" SQUARE OUTLET BOXES & COVERS

Applications:

- For use with conduit
- For use in commercial and industrial applications, where larger sized conductor or wiring devices are needed and additional volume is required
- Available in red for fire alarm applications

Features:

- Ideal for exposed work applications, providing an easy method for the installation of electrical devices (switches, receptacles, fans, lights, etc.)
- Raised ground screw location in the welded boxes saves time in installation
- Concentric knockouts have a 1/2" and 3/4" knockout in the same location for customer flexibility
- Knockouts are suitable for use without a bonding jumper in circuits above or below 250 volts
- Available in two depths for differing cubic capacity requirements
- Welded or drawn construction to match customer preference
- Extensive cover offering to meet various customer applications and needs



Certifications and Compliances:

- UL Listed

4¹¹/₁₆" SQUARE OUTLET BOXES – 29.5 CUBIC INCH CAPACITY

1¹/₂" DEEP WITH CONDUIT KOs

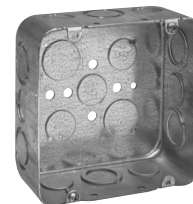
UL LISTED



TP523



TP548



TP549

Cat. #	Description	Knockouts		Unit Qty.	Wt. Lbs. Per 100
		Sides	Bottom		
TP523	Welded	12 - 1/2" + 3/4" C	2 - 1/2", 2 - 3/4"	25	99
TP523PF†	Welded	12 - 1/2" + 3/4" C	2 - 1/2", 2 - 3/4"	25	99
TP548	Drawn	8 - 1/2", 4 - 3/4"	3 - 1/2", 2 - 3/4"	25	84
TP549	Drawn	6 - 1/2", 6 - 1/2" + 3/4" C	3 - 1/2", 2 - 3/4"	25	84

†TTP catalog numbers ending in PF include ground screw with pigtail lead.

Steel Square Boxes

4^{11/16}" SQUARE OUTLET BOXES – 42.0 & 44.0 CUBIC INCH CAPACITY

2^{1/8}" DEEP WITH CONDUIT KOs

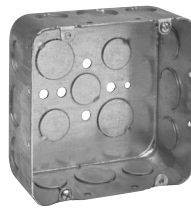
UL LISTED



TP563



TP554
TP842*



TP556
TP832*



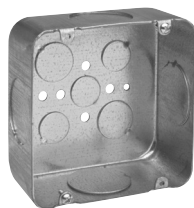
TP556RED



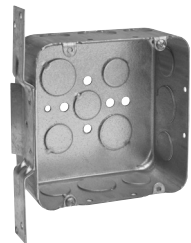
TP558
TP835*



TP560
TP836*



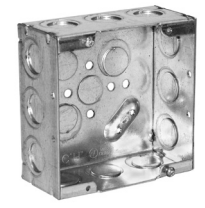
TP562



TP557



TP521



TP525

Cat. #	Description	Bracket	Knockouts		Unit Qty.	Wt. Lbs. Per 100
			Sides	Bottom		
42.0 Cubic Inch Capacity						
TP563	Drawn	-	6 - 1/2", 6 - 1/2" + 3/4" C	3 - 1/2", 2 - 3/4"	25	104
TP554	Drawn	-	8 - 3/4"	3 - 1/2", 2 - 3/4"	25	104
TP556	Drawn	-	8 - 1/2", 4 - 3/4"	3 - 1/2", 2 - 3/4"	25	104
TP556PF†	Drawn	-	8 - 1/2", 4 - 3/4"	3 - 1/2", 2 - 3/4"	25	104
TP556RED	Drawn	-	8 - 1/2", 4 - 3/4"	3 - 1/2", 2 - 3/4"	25	104
TP558	Drawn	-	4 - 3/4", 4 - 1"	3 - 1/2", 2 - 3/4"	25	104
TP558PF†	Drawn	-	4 - 3/4", 4 - 1"	3 - 1/2", 2 - 3/4"	25	104
TP560	Drawn	-	8 - 1"	3 - 1/2", 2 - 3/4"	25	104
TP562‡	Drawn	-	4 - 1 1/4"	3 - 1/2", 2 - 3/4"	25	104
TP557	Drawn	"VS"	5 - 1/2", 4 - 1/2" + 3/4" C	3 - 1/2", 2 - 3/4"	25	120
44.0 Cubic Inch Capacity						
TP521	Welded	-	12 - 1/2" + 3/4" C	2 - 1/2", 2 - 3/4"	25	115
TP521PF†	Welded	-	12 - 1/2" + 3/4" C	2 - 1/2", 2 - 3/4"	25	115
TP525**	Welded	-	12 - 1/2" + 3/4" E	2 - 1/2", 2 - 1/2" + 3/4" E	25	115
TP525PF†	Welded	-	12 - 1/2" + 3/4" E	2 - 1/2", 2 - 1/2" + 3/4" E	25	115
Air Plenum						
TP835*	-	-	4 - 3/4", 4 - 1"	3 - 1/2", 2 - 3/4"	25	115
TP836*	-	-	8 - 1"	3 - 1/2", 2 - 3/4"	25	115
TP842*	-	-	12 - 3/4"	3 - 1/2", 2 - 3/4"	25	115
TP832*	-	-	8 - 1/2", 4 - 3/4"	3 - 1/2", 2 - 3/4"	25	115

*For Air Plenum (no mounting holes) - not UL Listed.

**Raised ground bump contains holes for two ground screws.

†TP catalog numbers ending in PF include ground screw with pigtail lead.

‡Not UL Listed.

Steel Boxes

Steel Square Covers

4¹¹/₁₆" SQUARE EXTENSION RINGS

1¹/₂" DEEP WITH CONDUIT KOs – 29.5 CUBIC INCH CAPACITY

2¹/₈" DEEP WITH CONDUIT KOs – 42.0 CUBIC INCH CAPACITY

UL LISTED



TP550



TP564



TP837*



TP564RED

Cat. #	Description	Knockouts		Unit Qty.	Wt. Lbs. Per 100
		Sides	Bottom		
1¹/₂" Deep – 29.5 Cubic Inch Capacity					
TP550		8 - 1/2", 4 - 3/4"	-	25	66
2¹/₈" Deep – 42.0 Cubic Inch Capacity					
TP564		8 - 1/2", 4 - 3/4"	-	25	84
TP564RED		8 - 1/2", 4 - 3/4"	-	25	84
Air Plenum					
TP837*	2 ¹ / ₈ " Deep	8 - 1/2", 4 - 3/4"	-	25	84

*For Air Plenum (no mounting holes) - not UL Listed.
TP837 requires the use of TP852, purchased separately.

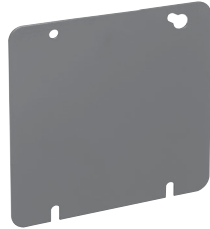
Steel Square Covers

4¹¹/₁₆" SQUARE COVERS – CUBIC INCH CAPACITY (SEE BELOW)

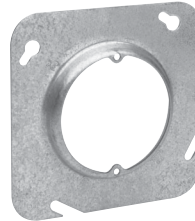
UL LISTED



TP568



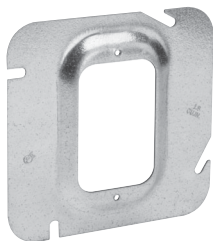
TP568RED



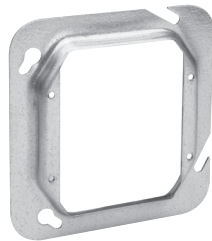
TP569, TP570, TP571,
TP573, TP575



TP572



TP574 - TP582,
TP529, TP531



TP584, TP586, TP589,
TP593, TP541, TP543



TP851*



TP852*

Cat. #	Description	Capacity Cu. In.	Unit Qty.	Wt. Lbs. Per 100
Flat and Raised				
TP568†	Flat Blank	-	25	40
TP568RED	Flat Blank, Red	-	25	40
TP569‡	½" Raised, with Ears 2¾"	3.3	25	36
TP570	⅝" Raised, with Ears 2¾"	3.8	25	38
TP571‡	¾" Raised, with Ears 2¾"	5.0	25	40
TP572†	Flat, with ½" KO	-	25	40
TP573‡	1" Raised, with Ears 2¾"	7.0	25	44
TP575‡	1½" Raised, with Ears 2¾"	9.0	25	48
Air Plenum				
TP851*	Flat Blank Gasketed with Captive Screws	-	50	42
TP852*	Flat Ring Double Gasketed	-	25	20
One Device				
TP574	¼" Raised	1.8	25	32
TP576	½" Raised	3.3	25	36
TP578	¾" Raised	5.0	25	42
TP579	⅝" Raised	4.5	25	39
TP580	1" Raised	6.8	25	46
TP582	1¼" Raised	8.5	25	52
TP529	1½" Raised	11.3	25	64
TP531	2" Raised	15.0	25	76
Two Device				
TP590‡	Flat	-	25	21
TP583‡	¼" Raised	3.0	25	26
TP584	½" Raised	6.0	25	30
TP587	⅝" Raised	8.0	25	32
TP586	¾" Raised	8.8	25	34
TP589	1" Raised	11.7	25	38
TP593	1¼" Raised	14.0	25	42
TP541	1½" Raised	18.8	25	63
TP543	2" Raised	24.5	25	79

*For Air Plenum (no mounting holes).

†CSA certified.

‡Not UL Listed.

Steel Square Covers

4¹¹/₁₆" SQUARE SURFACE COVERS – 9.0 CUBIC INCH CAPACITY

1/2" RAISED



TP720



TP722



TP724, TP730,
TP736



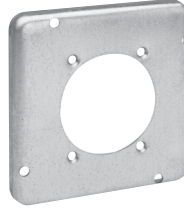
TP726



TP728



TP732



TP734



TP738



TP740

Cat. #	Description	Unit Qty.	Wt. Lbs. Per 100
TP720	For One Toggle Switch	10	52
TP722	For One Duplex Receptacle	10	49
TP724	For One Single Receptacle 1 ¹³ / ₃₂ " Dia.	10	53
TP730	For One 20 Amp Single Receptacle 1.620" Dia.	10	50
TP736	For One 1.730" Dia. Power Outlet	10	51
TP726	For Two Toggle Switches	10	52
TP728	For Two Duplex Receptacles	10	44
TP732	For One 2.125" Dia. Range/Dryer Receptacle	10	48
TP734	For One 2.480" Dia. Power Outlet	10	45
TP738	For One Ground Fault Interrupter	10	45
TP740	For One GFI Receptacle and One Toggle	25	45
TP741	For Two GFI Receptacles	10	43

Steel Boxes